



# CONTINENTAL PRECIOUS MINERALS INC.

**Defining a  
world-class  
polymetallic  
resource**

**TSX: CZQ**

[www.czqminerals.com](http://www.czqminerals.com)

# Forward Looking Statements

Certain statements contained in this presentation, including information as to the future financial or operating performance of Continental Precious Minerals and its projects, constitute forward-looking statements. All statements, other than statements of historical fact, are forward-looking statements. The words "believe", "expect", "anticipate", "contemplate", "target", "plan", "intend", "continue", "budget", "estimate", "may", "will", "schedule" and similar expressions identify forward-looking statements. Forward-looking statements include, among other things, statements regarding targets, estimates and assumptions in respect of mineral production and prices, operating costs and results, capital expenditures, mineral reserves and mineral resources and anticipated grades and recovery rates.

Forward-looking statements are necessarily based upon a number of estimates and assumptions related to future business, economic, market, political, social and other conditions that, while considered reasonable by Continental Precious Minerals, are inherently subject to significant uncertainties and contingencies. Many known and unknown factors could cause actual events or results to differ materially from estimated or anticipated events or results reflected in such forward-looking statements. Such factors include, but are not limited to: competition; mineral prices; ability to meet additional funding requirements; exploration, development and operating risks; uninsurable risks; uncertainties inherent in resource estimates; factors associated with foreign operations and related regulatory risks; environmental regulation and liability; currency risks; effects of inflation on results of operations; factors relating to title to properties; dependence on key personnel; and share price volatility, and also include unanticipated and unusual events, many of which are beyond Continental Precious Minerals' ability to control or predict.

Continental Precious Minerals disclaims any intent or obligation to update any forward-looking statements, whether as a result of new information, future events or results or otherwise. All forward-looking statements made in this presentation are qualified by the foregoing cautionary statements. Investors are cautioned that forward-looking statements are not guarantees of future performance and, accordingly, not to put undue reliance on such statements.



# Investment Highlights

- **Flagship property has massive polymetallic resource of over 2.8 billion tonnes**
- **Located in Sweden, Europe's largest metals exporter**
- **Metallurgical studies suggest potential high recoveries**
- **Strategic focus on joint venture with major mining companies**
- **\$24 million cash with no debt**
- **Attractive valuation**

# Massive Inferred Resource Base

		$U_3O_8$	$V_2O_5$	Mo	Ni
<b>INDICATED RESOURCE</b>	tonnes in 000's	23,610	23,610	23,610	23,610
	Grade (lbs/ton)	0.38	6.25	0.56	0.63
	Grade (%)	0.019	0.313	0.028	0.032
	<b>lbs metal/oxide in 000's</b>	<b>9,944</b>	<b>162,751</b>	<b>14,678</b>	<b>16,500</b>
		$U_3O_8$	$V_2O_5$	Mo	Ni
<b>INFERRED RESOURCE</b>	tonnes in 000's	2,830,757	2,830,757	2,830,757	2,830,757
	Grade (lbs/ton)	0.33	5.36	0.49	0.65
	Grade (%)	0.017	0.268	0.024	0.032
	<b>lbs metal/oxide in 000's</b>	<b>1,037,661</b>	<b>16,716,126</b>	<b>1,516,487</b>	<b>2,015,742</b>

1. Mineral resources which are not mineral reserves do not have demonstrated economic viability. The estimate of mineral resources may be materially affected by environmental, permitting, legal, title, taxation, socio-political, marketing or other relevant issues.
2. The quantity and grade of reported inferred resources in this estimation are uncertain in nature and there has been insufficient exploration to define these inferred resources as an indicated or measured mineral resource and it is uncertain if further exploration will result in upgrading them to an indicated or measured mineral resource category.
3. The mineral resources in this news release were estimated using the Canadian Institute of Mining, Metallurgy and Petroleum (CIM) Standards on Mineral Resources and Reserves, Definitions and Guidelines prepared by the CIM Standing Committee on Reserve Definitions and adopted by CIM Council December 11, 2005.



# Suite of Other Minerals

Element	Jamtland County Black Shale (% by weight)	Viken MMS Inferred Resource Grade (%)
Carbon (Organic)	14.2000%	
Aluminum	6.3000%	
Sulphur	4.4000%	
Potassium	3.8000%	
Iron	3.4000%	
Calcium	2.3000%	
Carbon	0.6200%	
Magnesium	0.5800%	
Titanium	0.3900%	
<b>Vanadium</b>	<b>0.1600%</b>	<b>0.268%</b>
Sodium	0.0600%	
<b>Molybdenum</b>	<b>0.0460%</b>	<b>0.024%</b>
<b>Nickel</b>	<b>0.0440%</b>	<b>0.032%</b>
Zinc	0.0270%	
<b>Uranium</b>	<b>0.0245%</b>	<b>0.017%</b>
Arsenic	0.0160%	
Copper	0.0138%	
Chromium	0.0112%	



# Three Mineral Focus

- **1.0 billion lbs. uranium**
- **16.7 billion lbs. vanadium**
- **1.5 billion lbs. molybdenum**

**HIGH POTENTIAL VALUE FROM  
MULTI-METAL RECOVERY**

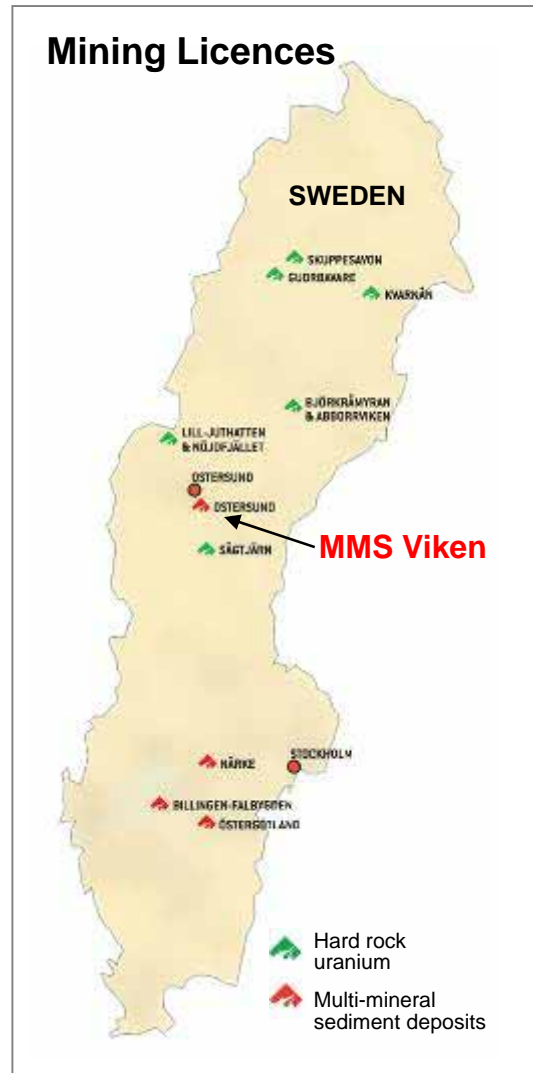


# Positive Preliminary Metallurgical Results

- **Significant metals recovery from ore samples**
  - $U_3O_8$  90%
  - $V_2O_5$  70%
  - Mo 90%
- **Tests conducted by Process Research ORTECH**
- **Detailed bench scale tests underway for process optimization**
  - Results to be used in designing pilot plant scale tests

# CZQ has Significant Landholding in Sweden

## Mining Licences



- 82 mineral exploration licences
- Continuing to increase land holdings
- Sufficient capital to self-fund exploration

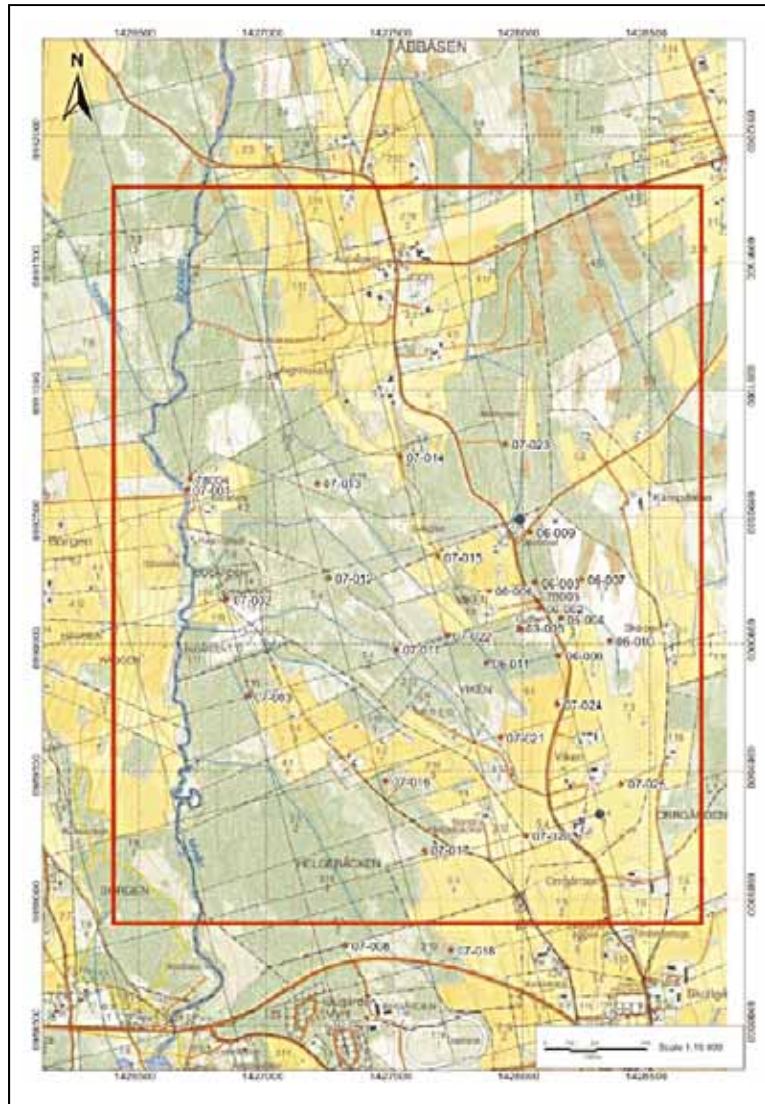
# Scandinavian Alum Shale Deposits



- Well known for high polymetallic content
- Europe's largest known uranium resource
- CZQ has among the most prospective landholdings



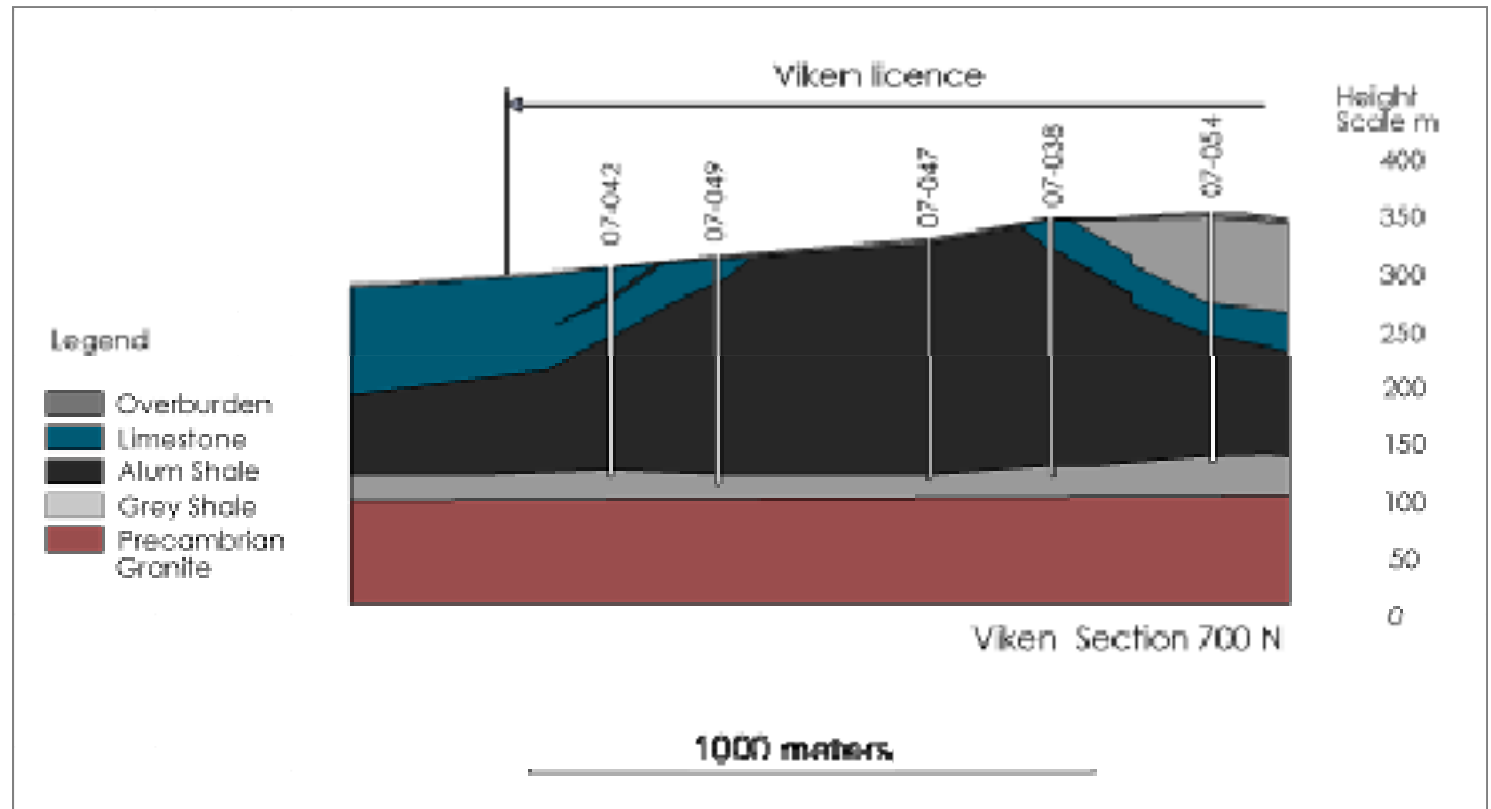
# Focus on Large Resource at MMS Vikem



- 650 kilometres north of Stockholm
- 18 MMS licenses covering approx 9,800 hectares
- 133 diamond drill holes (26,293 metres) completed by company



# Large Tonnage Mine Potential at Viken



- Resource available from surface to 200m
- 1.5km wide by 2km long and open at length

# Sweden In Favour of Uranium Mining



- No legal restrictions to uranium mining
- In 2009, Swedish PM stated that the government is pro uranium mining
- History of previous operating uranium mines in production and successful remediation



# Current Mining Projects in Sweden

## BASE METALS

2. Viscaria copper, zinc
3. Rakkurijärvi copper, gold, iron
4. Norrbotten copper, gold
5. Liikavaara Östra copper, gold
6. Aitik copper, silver, gold
7. Majves copper, gold
8. Ballek copper, gold
9. Jervas copper
10. Uma copper, zinc, lead, silver
11. Notträsk nickel, PGE
12. Storbodsund nickel, copper, cobalt
13. Ersmarksberget zinc, gold
14. Eva zinc, copper, silver
15. Rönnbäcken nickel
16. Lainejaur nickel
17. Storliden zinc, copper
18. Remdalen copper, zinc, gold
19. Rackejaur zinc, copper, silver, gold
20. Svärträsk zinc, lead, silver
21. Vindelgransele zinc, copper, lead, silver
22. Stekenjokk zinc, lead, copper, silver, gold
23. Maurliden zinc, copper, silver, gold
24. Kristineberg zinc, silver, copper, gold, lead
25. Norrliden zinc, copper
26. Petiknäs zinc, silver, lead, copper, gold
27. Renström copper, zinc, lead, silver, gold
28. Östra Åkulla zinc, silver, copper, gold, lead
29. Boliden copper, gold
30. Långträsk zinc, copper, lead, silver
31. Lappvattnet nickel
32. Ormsjö lead, silver
33. Lövstrand lead
34. Rörmryberget nickel
35. Hoting nickel, copper
36. Bellviksberg zinc, lead, silver
37. Granberget zinc, lead
38. Rockliden copper, zinc, lead, silver, gold
39. Storkullen zinc, gold
40. Slättberg nickel
41. Falun copper, gold
42. Garpenberg zinc, silver
43. Lovisagruvan zinc, lead, silver
44. Dingelvik copper, silver
45. Zinkgruvan zinc, lead, silver, copper
46. Tomtebo
47. Vitturn
48. Sala

## IRON

49. Kiirunavaara
50. Mertainen
51. Gruvberget
52. Leveäniemi
53. Stora Sahavaara
54. Malmberget
55. Grängesberg
56. Dannemora

## GOLD

57. Grundträsk
58. Vargbäcken
59. Älgträsk
60. Barsele
61. Björkdal
62. Stortjärnhobben
63. Svartliden
64. Fäboliden
65. Enåsen
66. Solvik
67. Gladhammar

## URANIUM

68. Kvarnån
69. Norr Döttern
70. Pleutajokk
71. Duobblon
72. Täsjö
73. Björkråmyran
74. Lilljuthatten
75. Hotagen
76. Viken
77. Southern Östersund Area
78. Storsjö

## OTHER

79. Routevare titanium, iron
80. Storuman fluorite
81. Sumåssjön vanadium
82. Olserum REE



# Viken Development Plan



- **Continue delineating and upgrading resource base**
- **Complete economic scoping study**
- **Complete metallurgy and environmental studies**
- **Partner with major mining company**

# Investment Highlights

- **Flagship property has massive polymetallic resource of over 2.8 billion tonnes**
- **Located in Sweden, Europe's largest metals exporter**
- **Metallurgical studies suggest potential high recoveries**
- **Strategic focus on joint venture with major mining companies**
- **\$24 million cash with no debt**
- **Attractive valuation**

# Proven Management Team

- **Ed Godin**  
President and CEO
  - founded CZQ in 1987
  - over \$75 million in financings
- **Mike Bromley-Challenor**  
EVP and Director of Exploration
  - A leading expert in uranium and oil shales with over 35 years of experience in Sweden
- **Gustav Åkerblom**  
EVP and Director of Environmental Management
  - Key liaison with Swedish authorities



Forsmark Nuclear Power Plant, Sweden

# Skilled Team Dedicated to CZQ Success

## METALLURGICAL RESEARCH

**V.I. (Lucky) Lakshmanan**  
**Process Research ORTECH Inc.**

---

**Al Hayden**  
**EHA Engineering Ltd.**

## ECONOMIC SCOPING STUDY

**Gene Puritch**  
**P&E Mining Consultants**

## COMMUNITY RELATIONS

**Syre Communications**  
**Östersund, Sweden**

## INVESTOR RELATIONS

**Craig MacPhail**  
**BarnesMcInerney Inc.**

# Independent Board Members



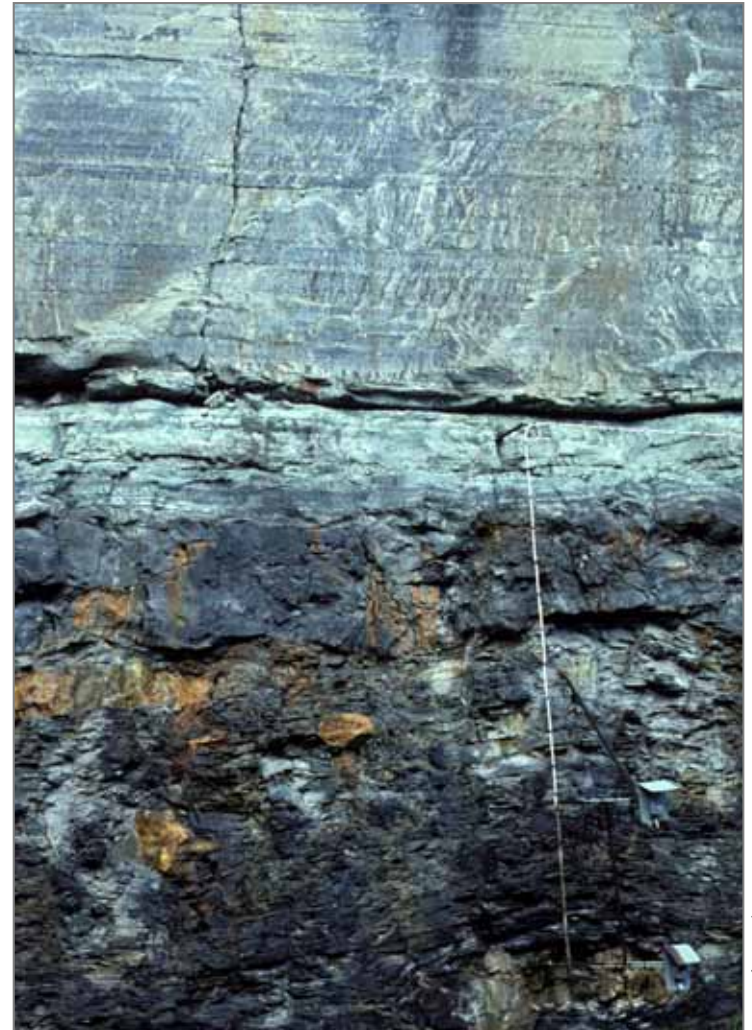
- **Patricia Sheahan, Chairman**
  - 35 years mining and geology experience
- **Gerard Osika**
  - financial consultant
- **Herb Dhaliwal**
  - former Minister of Natural Resources

# Investor Contacts

Ed Godin  
416-805-3036

Craig MacPhail  
416-367-5000, ext. 244

**Analyst Coverage**  
Octagon Capital Corporation  
Rob Chang  
416-306-2558



Creative Commons photo by Yvon



# CONTINENTAL PRECIOUS MINERALS INC.

---

## **Corporate Office**

50 Richmond Street East  
Suite 101  
Toronto, Ontario  
M5C 1N7

## **Swedish Exploration Office**

Eriksgatan 17, S-771 31,  
Ludvika, Sweden